

## Anti-H\_PDCD1LG2 mIgG1 Antibody(3G2)

### Product information

GM-32251AB-10	10 µg
GM-32251AB-100	100µg
GM-32251AB-1000	1 mg

### Antibody Information

Species Reactivity	Human
Clone	3G2
Source/Isotype	Mouse IgG1, κ
Application	Flow cytometry
Specificity	Detects PDCD1LG2
Gene	PDCD1LG2
Other Names	PD-L2; Btdc; PDL2; bA574F11.2; CD273; B7-DC
Gene ID	80380
Background	PD-L2 is a cell surface receptor belonging to the B7 protein family. It consists of both an immunoglobulin-like variable domain and an immunoglobulin-like constant domain in the extracellular region, a transmembrane domain, and a cytoplasmic domain. PD-L2 is primarily expressed on professional antigen presenting cells including dendritic cells (DCs) and macrophages. PD-L2 Binding to PD-1 can activate pathways inhibiting TCR/BCR-mediated immune cell activation. PD-L2 plays an important role in immune tolerance and autoimmunity. PD-L2 can inhibit T cell proliferation and inflammatory cytokine production. Blocking PD-L2 has been shown to exacerbate experimental autoimmune encephalomyelitis.
Storage	Store at 2-8°C short term (1-2 weeks).Store at ≤ -20°C long term. Avoid repeated freeze-thaw.
Formulation	Phosphate-buffered solution, pH 7.2.
Endotoxin	< 1 EU/mg, determined by LAL gel clotting assay

## Data Examples

Flow cytometry

H\_PDCD1LG2(PDL2) aAPC CHO-K1 Cell Line was stained with Anti-H\_PDCD1LG2 mIgG1 Antibody(3G2) (Catalog # GM-32251AB) or isotype control antibody, followed by anti-Mouse IgG APC-conjugated Secondary Antibody.

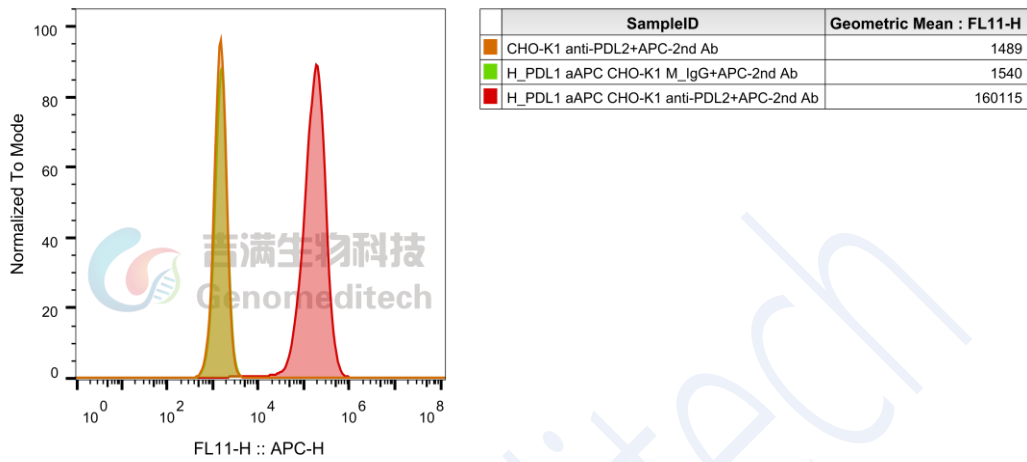


Fig. FACS